

Full
Moon

Cut

Waning
Gibbous

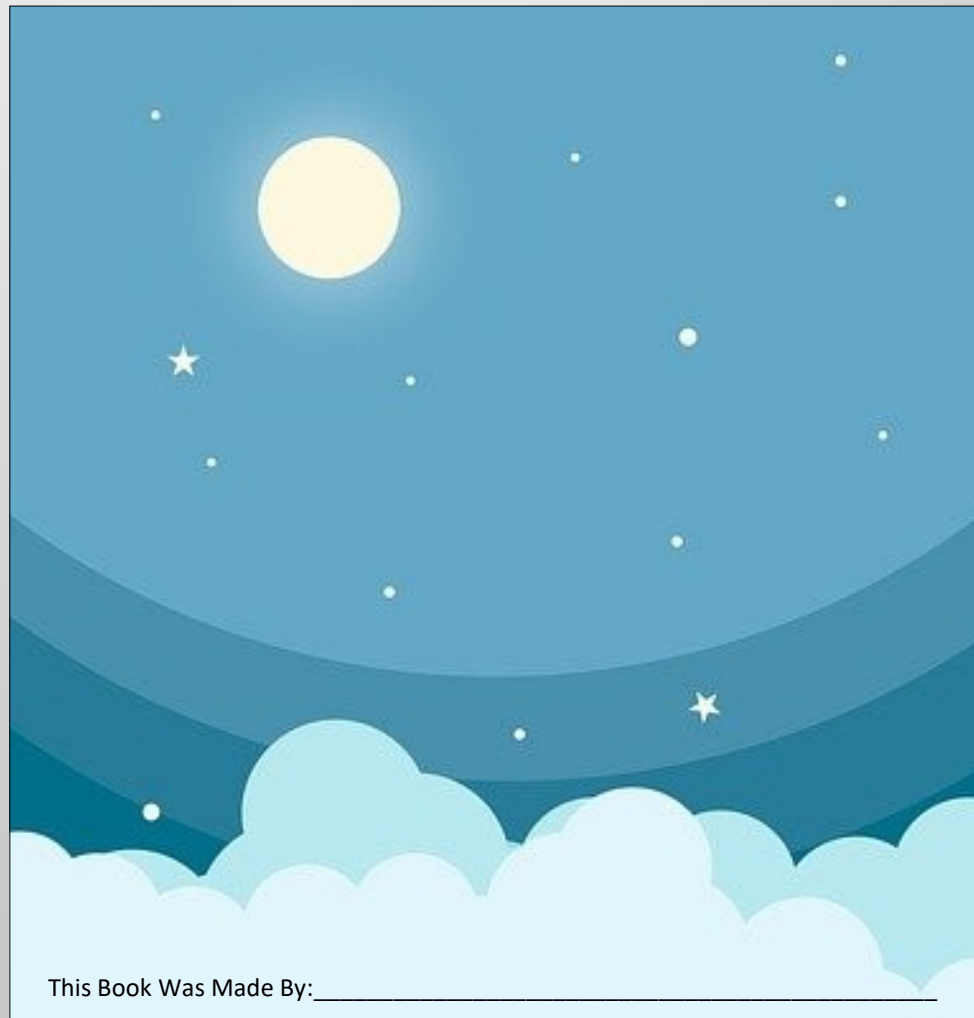
Cut

Third
(or last)
Quarter

Cut

Waning
Crescent

Fold



New
Moon

Cut

Waxing
Crescent

Cut

First
Quarter

Cut

Waxing
Gibbous

Fold

Fold

Definition:

The phase of the moon invisible from earth



Cut

Definition:

The phase of the moon when it is fully illuminated



Cut

Definition:

A slim crescent of the moon is slightly illuminated



Cut

Definition:

The phase that is more than half full, but growing smaller



Cut

Definition:

The moon phase where exactly half of the side facing earth is illuminated



Cut

Definition:

The moon phase that is half full and growing smaller



Cut

Definition:

The moon is more than half lit, and just before the full moon



Definition:

A slim portion of the moon is illuminated right before new moon



How to make your Moon Phases folding book:

1. Print the two pages
2. Put the pages together, back to back
3. Glue or tape pages together and let dry
4. Fold along the lines that say “fold”
5. Cut the lines that say “cut”
6. Fill out your name on the front of your book!